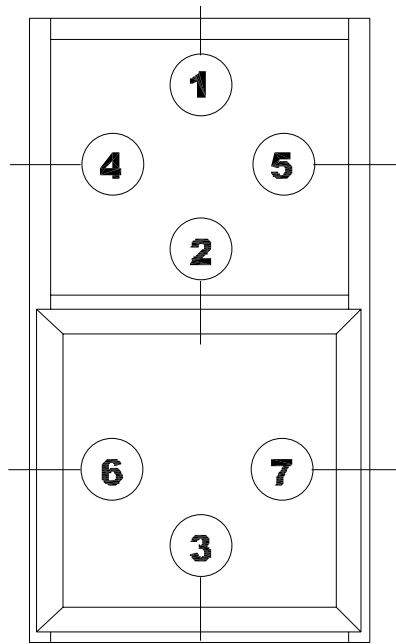




TH-5250 SERIES

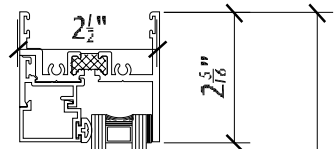
2 1/2" MAIN FRAME
 FIXED OVER CASEMENT IN SWING
 1" INSULATED GLAZING

FOR COMPLETE SELECTION OF DRAWINGS FOR THIS WINDOW SERIES
 PLEASE CONTACT US EITHER BY E-MAIL, ENG-DEPT@TMIWINDOWS.COM
 OR BY CALLING THE ENGINEERING DEPARTMENT AT 908-810-0030

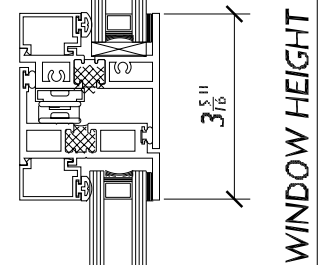


WINDOW ELEVATION

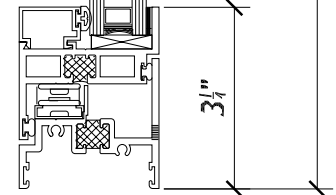
HEAD 1



**MTG. RAIL 2
4-BAR**



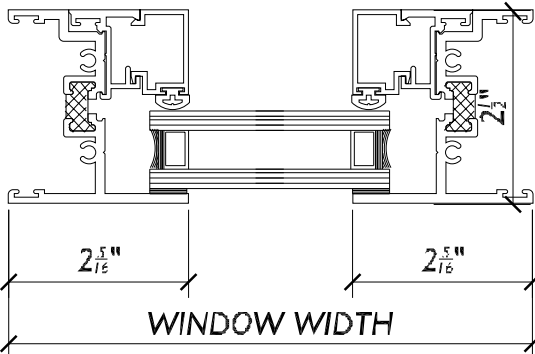
**SILL 3
4-BAR**



WINDOW HEIGHT

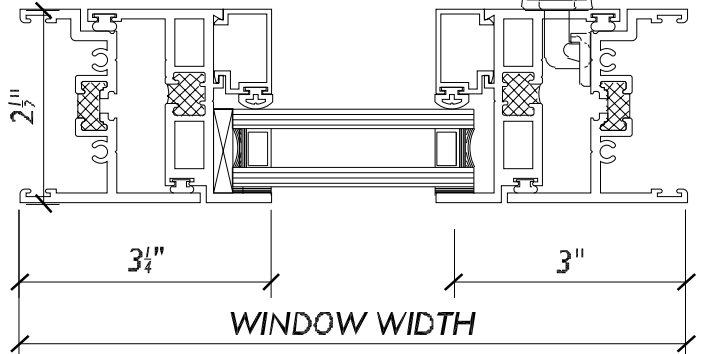
JAMB

4



JAMB

5

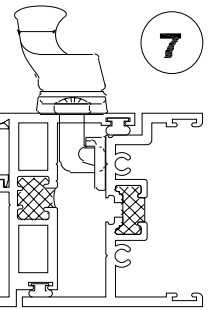


JAMB

6

**JAMB
CAM**

7



WINDOW WIDTH

WINDOW WIDTH